

**WoodCreek Elementary**

1155 WoodCreek Bend Lane  
Katy, TX 77494

Phone: 281-234-0100

Fax: 281-644-1690

www.WoodCreekElementarypta.org

# Wilderness Weekly



VOLUME 4

SEPTEMBER 24, 2008

**DATES TO REMEMBER**

September 26 - early dismissal/1st six weeks ends

September 29 - 2nd six weeks begins

October 3 - Report Cards go home

October 7 - PTA General Meeting and 3rd grade performance

October 8 - VIPS Workday

**INSIDE THIS ISSUE:**

Diane's Words of Wisdom	1
Clip and Return	1
G/T Screening for Kindergarten	2
PTA Membership News	2
Ranger Round Up	2
Wide World of Volunteers	3
Rockin' Rangers	3
Music Notes	3

## Questions, Concerns, Comments?

Dear WCE Rangers, Parents, Staff and Community,

Your PTA hopes all of you have weathered the storm in relatively good fashion. An amazing amount of damage was seen in Katy, Never again will I assume that we are 'too far inland' to suffer the effects of a hurricane! Next time, I am outta here! Things are slowly getting back to normal for our area, others are still evacuated, a few of which will become new Rangers. We want to welcome our newest members to the Forest and offer any help we can. Please let us know if you have family or friends here needing any assistance.

Moving forward, the WCE PTA is curious as to the readership and interest in this newsletter. At the bottom of this page is a 'clip out', please take the time to fill it out and return it with your child to his/her teacher. We would love more community input and want to know if you have found the information contained herein useful. Tell us what you want to know, and let us see if we can provide more news and upcoming event schedules to you.

As always, you may email concerns, issues and questions to me at [president@woodcreekelementarypta.org](mailto:president@woodcreekelementarypta.org). I have the best sources of information to draw upon, the volunteers at WoodCreek, without whom I would be SO lost. If you have returned the volunteer opportunities form from the first day packet, thank you. You will be hearing from us very soon. If you have not yet had a chance to return the form, please do so at your earliest convenience. Don't have the form? Email me with your name, email address and children's grade levels...I will make certain you are connected with the right people. We want all willing parents, and grandparents, to be involved in the PTA; everyone is welcome and very much needed.

Thank you for your time, and best wishes for a speedy recovery from 'Ike'. Once again, please let us know if there is anything we can do to help displaced friends and family members.

Sincerely,

Diane Pharr

WCE PTA President

\_\_\_\_ Yes, I do read and enjoy the Wilderness Weekly Newsletter. Other items I might like to have included are:

\_\_\_\_\_  
\_\_\_\_\_  
\_\_\_\_\_

\_\_\_\_ No, I never read the WW Newsletter and it is purely by chance that I have returned this portion

# Gifted/Talented Kindergarten Screening

**Morning with Mom and Day-break with Dad have been postponed. Please stay tuned for the new dates and times.**

RANGER ROUND  
UP

## SEPTEMBER

26th - WCE spirit day

## OCTOBER

1st - Character Counts

Patience - wear orange/  
jeans

3rd - WCE spirit day

7th - College Spirit day

7th - 3rd grade  
performance

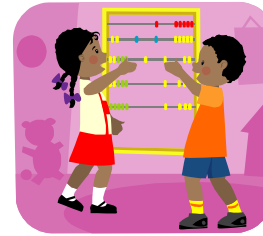
8th - Kinder Career  
Dress Up Parade

Have a question, comment,  
or concern about buses?  
Please call Jeanette Hooper  
or Alan Tomlinson  
at 281-396-7560.



Information regarding screening of kindergarten students for the gifted and talented program will be sent home with kinder students beginning the week of September 22. Kindergarten parents who would like to refer their children for screening must return the Kindergarten Parent Checklist to their campus by October 17. Two GT information sessions will be held for parents of kindergarten students, one on October 2 at the Katy ISD Education Support Complex and the second on October 9 at Morton Ranch Elementary School. Both sessions begin at 7:00 PM. Kinder-

garten parents who would like more information about the gifted and talented program and the screening process may attend either session.



Dear WoodCreek Elementary Families, Faculty and Community,

Partnerships between parents, educators and children enhance children's success. We know that children learn more and have better lives when everyone in the school community works together to share thoughts and information and work on projects to benefit children. WCE hosts many programs that benefit the children at our school. These programs include Ranger Science, PATHS, literacy library, and continuing educations courses for our teachers. These programs are made available through PTA funds. When you are a member of WCE PTA you become an important part of helping to ensure that these programs continue and our new plans become a reality. Our Goal this year is 100% PTA membership which is one member for every child enrolled. We have approximately 950 students enrolled for 08-09. Our PTA membership as of today is approximately 650 members. We are so close and really need every parent with a child enrolled as well as all faculty and community members to reach that goal. We would love to reach that goal for our children by or before Oct. 15, 2008. If you are not already a member of the WCE PTA, PLEASE join with us to make a difference in the education, health, and welfare of our children. We also welcome your new ideas for the benefit of our children. Complete the attached form and return it with your payment to: WCE PTA.

If you'd like any additional information about the WCE PTA, please feel free to contact:

Ginny Roscom, Membership Chairman  
[membership@woodcreekelementarypta.org](mailto:membership@woodcreekelementarypta.org)

Diane Pharr, WCE PTA President  
[president@woodcreekelmentarypta.org](mailto:president@woodcreekelmentarypta.org)

**General PTA Meeting/3rd Grade  
Performance  
October 7, 2008 (new date)  
6:30 pm**



# Wide World of Volunteers

If you are looking for another way to volunteer, the cafeteria has the perfect job for you! Our young Rangers have difficulty opening all of those milk cartons, ketchup packs and flatware packets. If you are having lunch with your student, come a little early or stay a little later and volunteer for 30 minutes. Volunteering in the cafeteria is a great way to mingle with your child and meet their classmates.



Our first volunteer workday was Wednesday, September 10<sup>th</sup>. We had a wonderful turn out with over 30 volunteers who shared their time and friendship with us as we helped complete teacher's projects. Volunteers visited and munched on the yummy Spanish themed snacks that the office personnel so graciously provided for us. They even had a fun theme of "WCE volunteers our Na-cho average volunteers". We gave away 5 hourly door prizes of cute leopard print Coozie's with Starbucks gift cards to those who had their names picked from the basket. Thank you to all WCE Volunteers who attended, we were able to complete so many projects for our WCE staff; we could not have done it with-

out you! We look forward to seeing you again on our next volunteer workday Wednesday, October 8th for more Fun, Food and Friendship.

If you would like to have more information about volunteer opportunities at WCE please email Jennifer Niedzielski at [nski2@aol.com](mailto:nski2@aol.com)

**October VIPS  
workday is  
Wednesday,  
October 8th  
9am-3pm.**



## Rockin' Rangers and Reading Grandmas

The Rockin' Ranger is awarded to 2 volunteers a month who have been awesome leaders at WCE in their volunteer efforts. The WCE PTA is pleased to announce Jennifer Holladay & Tanya Gemela as the Rockin' Rangers for the month of September! Thank you ladies for your outstanding Volunteerism!

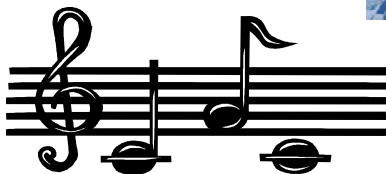
Tanya with her Ranger girls



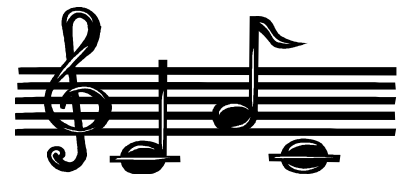
Jennifer and her little Rangers



It was a wonderful turn out with so many grandparents who came to read. The children were glued to the stories and all enjoyed a most memorable morning!



## Music Notes



The 3<sup>rd</sup> grade students are working on a musical, "Mighty Minds", which will be presented on October 7th at 1:45pm (WCE gym) and 6:45 pm. Special t-shirts have been designed and ordered for this special presentation. Parents are working with the speaking parts and also have designed the stage (Thank you, parents!!! We Love You!!!)!! Make sure you are there on the 7th to see it!

The 5<sup>th</sup> grade choir got started September 9th! At the Thursday rehearsal for the WoodCreek Singing Rangers, there were 75 students present--and what a great group!!!! We have a few more spaces left for any interested 5<sup>th</sup> grader that wants to come join the Singing Rangers. The choir meets on Tuesday and Thursday mornings at 7:25 am (please drop off students at the entrance by the music rooms---but not before 7:15 am---Thanks!)